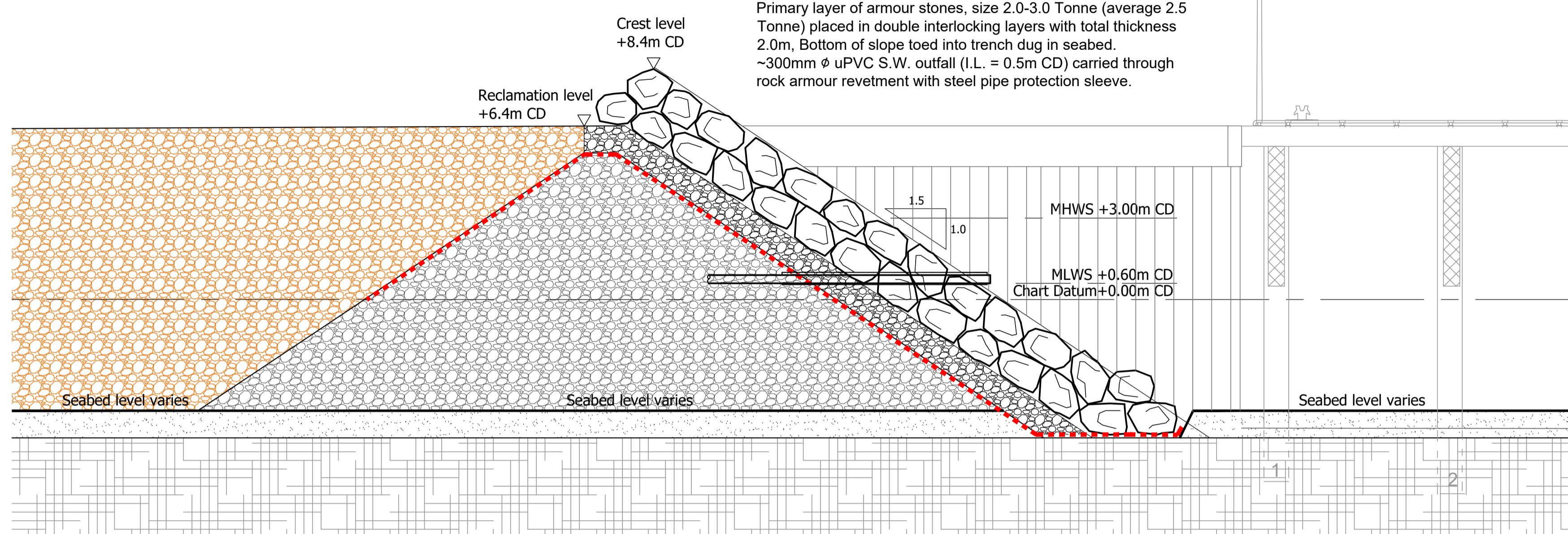
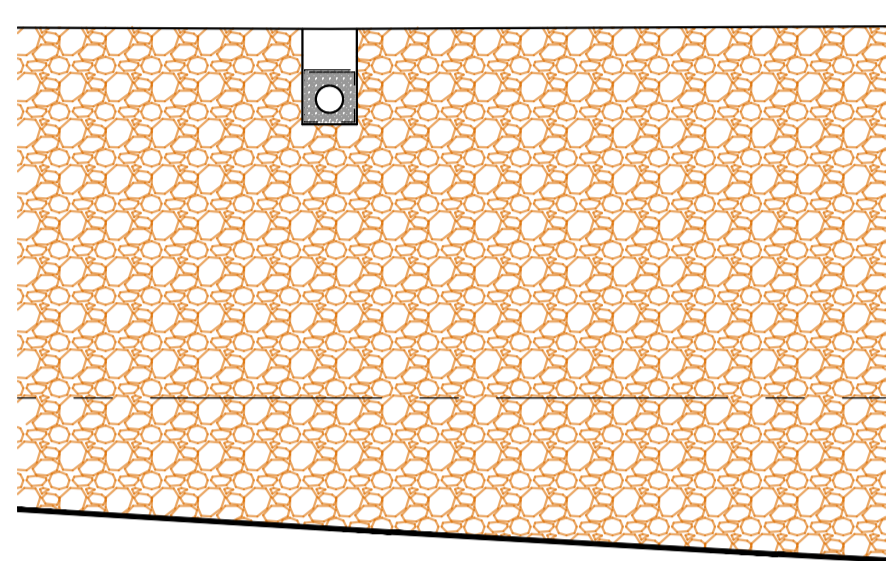
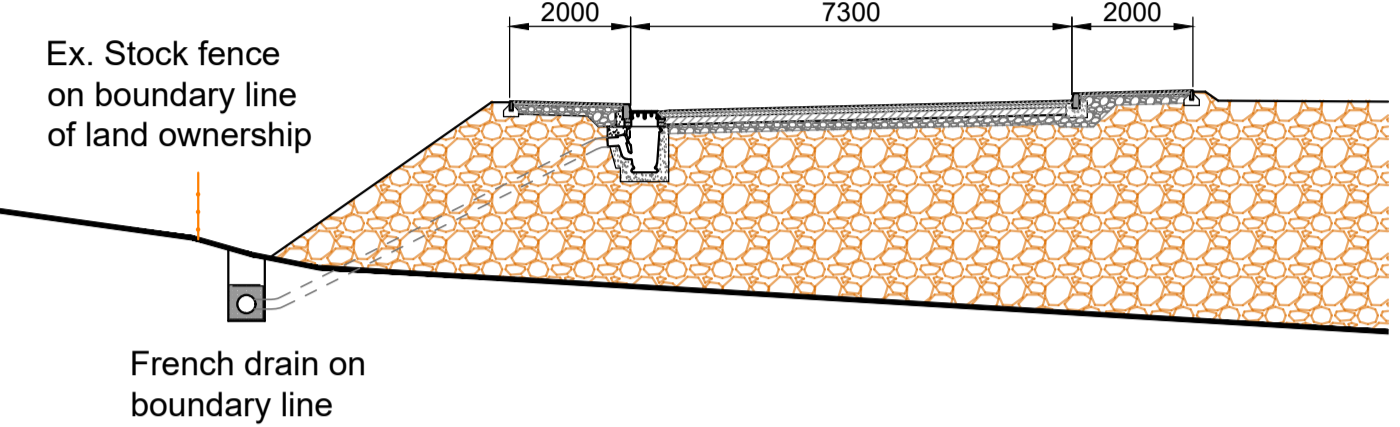


**Phase 1 Works - South Side Reclamation:**  
**Rock Armour Revetment**  
 Rock armour revetment slope consisting:  
 Fragmented rock bund graded to 1:1.5 slope on outside slope and natural angle of repose on inside.  
 Terram 2000 geotextile (or equal) on top of rock bund.  
 Secondary armour layer, min 600mm thk layer, size 100-300kg stones  
 Primary layer of armour stones, size 2.0-3.0 Tonne (average 2.5 Tonne) placed in double interlocking layers with total thickness 2.0m, Bottom of slope toed into trench dug in seabed.  
 ~300mm  $\phi$  uPVC S.W. outfall (I.L. = 0.5m CD) carried through rock armour revetment with steel pipe protection sleeve.

**Access Road to Development Sites:**  
 Bitmac surfaced access road, approx 7.3m wide, with 2.0m wide footpaths either side.  
 Road constructed with edge kerbs and road gullies, discharging into surface water drains via road side french drains

**Reclamation Area:**  
 Class 1A Core infill material thoroughly compacted above MLWS using appropriate plant, 150mm thk capping Layer to reclamation area.  
 Area to have falls on surface towards central French Drain, providing drainage and one level of surface water treatment



ORKNEY ISLANDS COUNCIL  
 ORKNEY LOGISTICS BASE, HATSTON  
 PHASE 1 WORKS  
 SOUTH SIDE RECLAMATION - TYPICAL SECTION

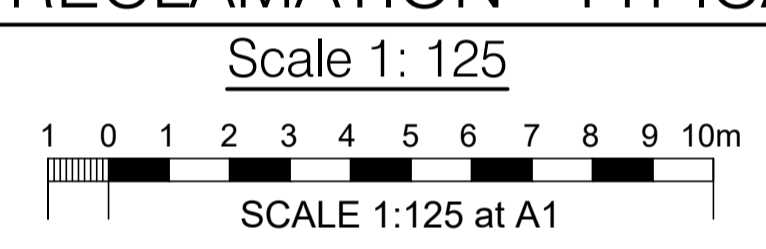


Chart Datum (Kirkwall)	Ordnance Datum (Newlyn)	Quay Heights and Tide Data Hatston Pier, Kirkwall
+6.40m	+5.00m	Quay Edge Level
+3.00m	+1.60m	Mean High Water Spring Tides
+1.40m	0.00m	Ordnance Datum (Newlyn)
+0.60m	-0.80m	Mean Low Water Spring Tides
0.00m	-1.40m	Chart Datum (Kirkwall)
-5.00m	-6.40m	
-7.50m	-8.90m	
-10.00m	-11.40m	

REV	DATE	REVISION	DRN	CHK
P1	21.02.2023	Preliminary Issue P1 for comment	JJM	

THIS DRAWING IS COPYRIGHT . DO NOT SCALE FROM THIS DRAWING.



Orkney Logistics Base, Hatston, Orkney  
 Consenting Process  
 Phase 1 Works: Typical Cross Section

**Arch Henderson** 1919

Civil Engineers  
 Structural Engineers  
 Architects  
 CDM Co-ordinators  
 Geotechnical services  
 Environmental services

Stewart Building, Lerwick, Shetland, ZE1 0LL.  
 Tel : 01595 695512  
 www.arch-henderson.co.uk - email : lerwick@arch-henderson.co.uk

Aberdeen, Dundee, Glasgow, Lerwick, Inverness, Thurso, Stromness, Southampton, Falkland Islands

DRAWN :	DATE :	CHECKED :	APPROVED :
JJM	February 2023	SSJ	APS

SCALE : (A1)	DRAWING STATUS :
As Shown	Consents

DRAWING No :	REV :
202043/C- 12	-